



Shalom Ramah Wisconsin Families,

Thank you to everyone who was able to join us for our Countdown to Camp Info Session Monday night. With only 47 days to go until the opening of the 2025 season, we are so excited about all the fun planned for this summer!



Webinar Recap

If you were unable to log on or need a refresher, check out the recording below of last night's info session. You can [download the slide deck here](#), and don't hesitate to [contact our team](#) if you have more questions!

Also check out the links to our previous Countdown to Camp emails at the bottom of this email for more details on many of the topics covered in the info session.



Get in the Summer Spirit

Did you know we have a Spotify channel? It's filled with playlists to get you in the summer spirit. Be sure to share it with your campers as you're counting down to camp!



Listen Now!



Download the Companion App Now!

If you have not yet downloaded the new [Companion App](#), now is the time! Not only can you use it to easily complete your camp forms, but you'll need it this summer to view photos and send emails.



Download Companion App



Viewing Summer Photos

This summer we're excited to bring you photo updates in your Companion App as well as your regular CampMinder account.
[Click here for all you need to know about viewing photos on Companion and in the CampMinder CampInTouch Portal.](#)

Highlights:

- Parents/Guardians can view photos in both the [Companion App](#) and the [CampInTouch Portal](#).
- Companion includes facial recognition, so make sure to upload a photo of your campers(s) to train the app.
- Other family members and friends can use the CampInTouch Portal to view photos - parents/guardians must create guest accounts for others to be able to view photos.



We post regular photo updates for everyone to share in the magic of camp. Our photographers work hard to cover all areas of camp in an efficient manner, while remaining unobtrusive. They cannot be in all areas at all times. Please understand that not every camper will be in every photo update, nor will every eidah (age group) be posted every day.

You can also follow us on [Facebook](#), [Instagram](#) and [TikTok](#) for updates.

.....

Communicating with Your Camper

Email

This summer you'll be able to email your camper through the Companion App!

[Click here for detailed instructions on using the email system as well as setting up guest accounts for your friends and family.](#)



Emails in Hebrew

The CampMinder system and the Companion App do not recognize Hebrew letters. If you would like to send a message to your camper in Hebrew, please send your message to israelicampmail@ramahwisconsin.com and we will print it and distribute it with the rest of the CampMinder emails. Write your camper's name and cabin number in the subject of the email. **Your campers will still reply to you using CampMinder so plan to check your account for replies, and make sure anyone who writes to your camper has a guest account as described in [this document](#).**

Mail and Packages

Please address all mail to campers as follows:

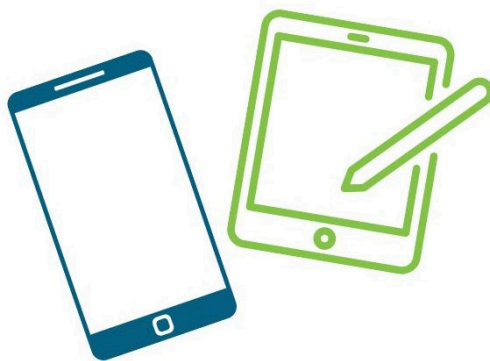
Camper's Name
Bunk Number
3390 Ramah Circle
Conover, WI 54519-9599

.....

Screen Policy

Speaking of apps and emails, you might be wondering about screen time at camp.

Camp Ramah in Wisconsin strives to create a truly "unplugged" and screen-free environment for our campers. For this reason, the only electronics campers are allowed to bring to camp are screen-less music players, digital cameras, and basic e-readers (that do not include downloadable applications). [Click here to read the full screen policy.](#)



If you have further questions, [our team](#) remains available and accessible to you. You may also [schedule a one-on-one conversation with a staff member here](#). Thank you for your continued partnership!

Shalom,



Jacob Cytryn
Executive Director



Adina Beiner
Assistant Director

.....

Additional Reminders

<p>Forms Due NOW</p> <p>Camper Care Form Transportation Form Health History</p> <p>Forms Due TOMORROW</p> <p>Physician's Exam Health Insurance Immunizations Bunk Request Camper Brit All About Me Form Text Message Opt-in B'nai Mitzvah Tutoring</p>	<p>Download the Companion App</p> <p>Use your regular CampMinder credentials to log in. You'll be able to complete all your forms right in the app!</p>
--	---

In Case You Missed It

Click the links below for our previous Countdown to Camp emails.

- [How do I get ready for camp?](#)
- [How do I share information about my camper?](#)
- [How does my child get to camp?](#)
- [How will my child stay healthy at camp?](#)
- [How do we create community at camp?](#)

- [How can I visit camp this summer?](#)
- [How do I pack for camp?](#)
- [All Countdown to Camp Emails](#)

Winter Address: 67 E. Madison St. Suite 1905 Chicago, IL 60603 312-606-9316		
Camp Ramah in Wisconsin 3390 Ramah Circle Conover, WI 54519 715-479-4400	Ramah Day Camp 98 W. Hintz Road Wheeling, IL 60089 847-537-9700	